

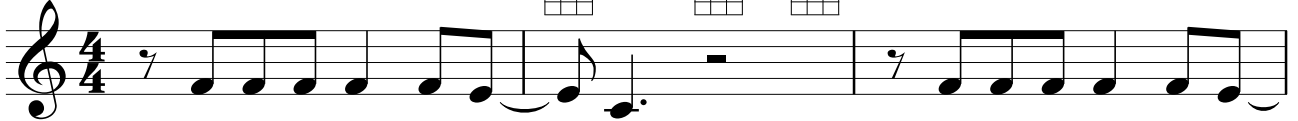
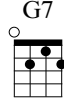
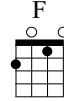
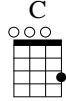
# La Bamba

By Ritchie Valens

First note

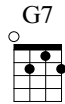
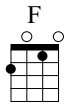
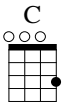


Moderate Latin Rock

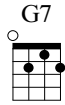
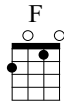
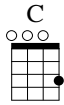


Pa - ra bai - lar la bam - ba,

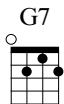
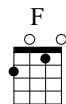
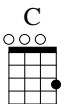
pa - ra bai - lar la bam -



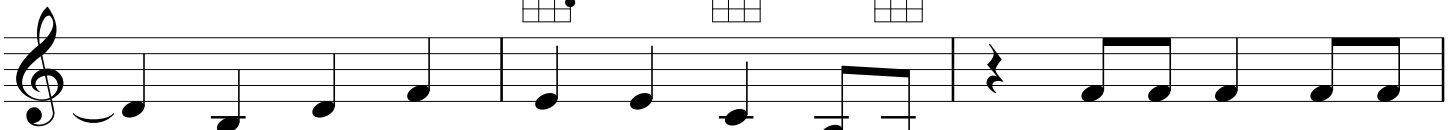
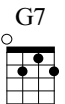
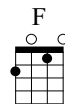
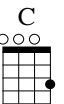
- ba se ne - ce - si - ta u - na po - ca de gra - cia.



U - na po - ca de gra - cia par' mi par' ti \_\_\_\_\_ y ar - ri - bay ar - ri -



- ba, ar - ri - bay ar - ri - ba. Por ti se - ré, \_\_\_\_\_



\_\_\_\_\_ por ti se - ré, por ti se - ré. Yo no soy ma - ri -

© 1958 (Renewed 1986) EMI LONGITUDE MUSIC and WARNER-TAMERLANE PUBLISHING CORP.  
All Rights for the United States Controlled and Administered by EMI LONGITUDE MUSIC  
All Rights Reserved International Copyright Secured Used by Permission

C F G7 C F G7

ne - ro. Yo no soy ma - ri - ne - ro, soy ca - pi - tan; -

C F G7 *To Coda*

soy ca - pi - tan, soy ca - pi - tan.

C F G7 C F G7

Bam - ba bam - ba, bam - ba bam -

C F G7

- ba, bam - ba, bam - ba,

C F G7 *D.S. al Coda*

bam - ba bam... Pa - ra bai - lar la bam -

**Coda**

C F G7 *Repeat and fade*

Bam - ba, bam - ba!